



Setup Instructions

Remote Access

**For connecting to a Cabak Mon Server Application
from a remote desktop, using the Cabak Mon Client Application.**



Draft Copy – 04/06/2009

INDEX

1.	Introduction	3
2.	Overview	4
3.	Example Network.....	5
4.	Requirements.....	6
5.	Getting Started.....	7
5.1	Setting up the Routers	7
5.2	Setting up the DataBase	8
5.2.1	Open SQL Server Management Studio.....	8
5.2.2	Select the Data Base to edit.....	9
5.2.3	Add a new login	9
5.3	Testing connections.....	11
5.3.1	Telnet.....	11
5.3.2	SQL Server Management.....	12
5.3.3	Standalone Computer	13
6.	Setting Up the remote Computer.....	14
6.1	Cabak Conection setup.....	14
6.2	Starting a session.....	16
6.3	Register your software	17
7.	Security Control	17
8.	Contact Details	17

1. Introduction

This document describes the steps required to set up a remote session with an existing site running Cabak Mon.

The application allows remote users to view live data, trends, graphs and historical reports or to produce new reports. Essentially, any non-admin user function that can be done locally is able to be performed remotely.

The remote user desktop displays the same information as the local user. Detailed steps on its use and operation can be referred to in the Cabak Mon User instructions.

The only noticeable difference to the user, in terms of functionality, is the log on. This is covered in detail in this document.

There are a lot of specific requirements to enable remote access. Although this document does not cover every possible way of setting up remote access, it does cover a typical setup in great detail. This document deals with a typical Windows XP® setup.

Throughout this document, there are many notes and warnings. These are depicted by the following icons:

Notes:



Warnings:



Eg.



Note: This requires version 1.6.0.1 or better

2. Overview

The description under focus deals with a remote computer that runs the Cabak Mon Application and is connected to an Ethernet (LAN), where access to e-mails and internet is via a Router (WAN). The remote computer that wishes to access this information is set up in the same manner.

The Cabak Mon software can be utilised as a server or as a client.



The server will be collecting the data via multiple connections to various networks and generate alarms and reports as required.



The Client is typically software running on an off site computer that wishes to access data from the server.

User names and passwords within Cabak Mon set up will allow for the restriction of information from various users.

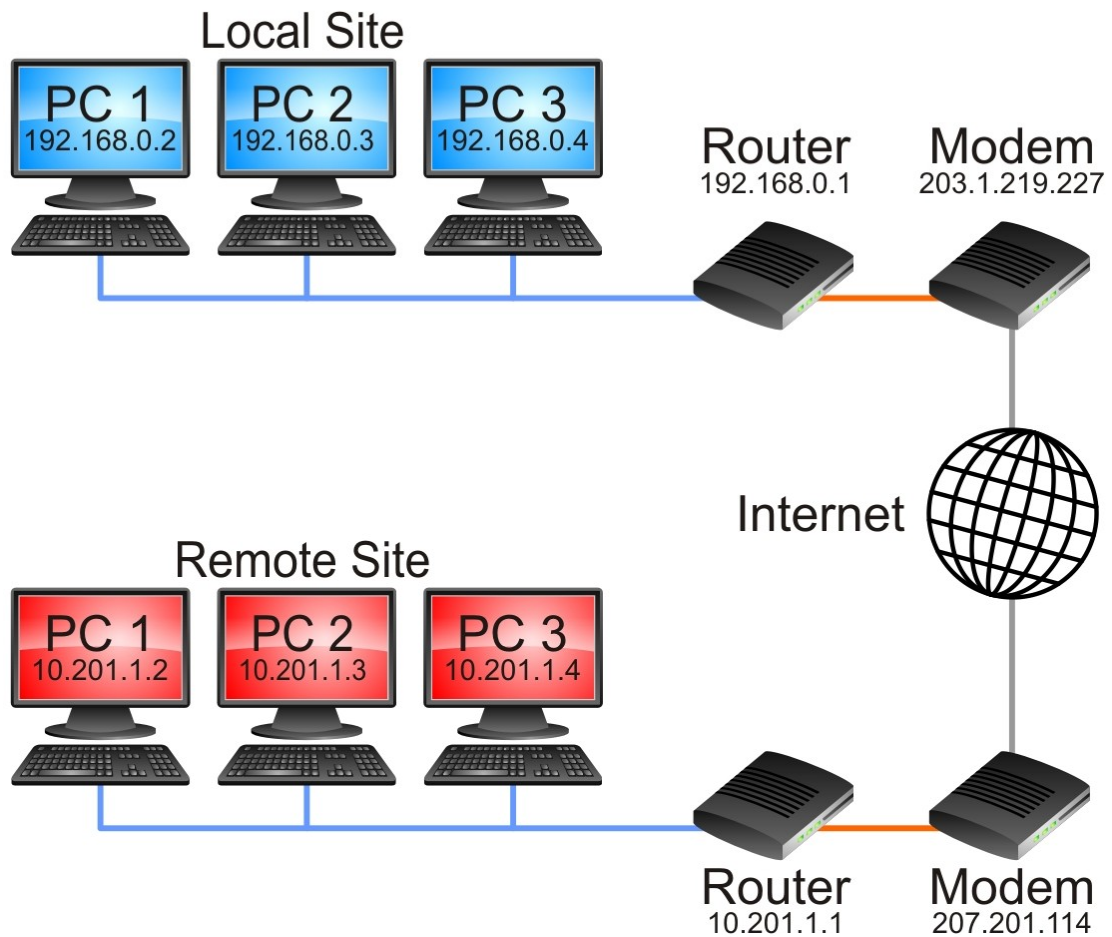
3. Example Network

For the purpose of explanations, the network below will be referred to in all examples. The computer with the Cabak Mon Application running on it will be referred to as the Local Site and the user wishing to access this information will be referred to as the Remote Site.

The IP addresses are made up but will be used for clarity.



Note: In this example imagine PC 2 on the Local site is running the Cabak Mon as a server and that the PC 3 on the remote site is running the Cabak Mon as a Client.



4. Requirements

The setup described is for an Ethernet over Internet connection and deals with the setup of the Computers, Routers and software at each end.

The user must have permissions to set up Routers, Firewalls, Database user names and passwords, at both ends.

The SQL Server Configuration Manager software is required and the SQL Server Management Server Express software is a useful tool to diagnose and test with. Both of these are able to be obtained from the Microsoft downloads page at www.microsoft.com.

A sound understanding of TCP Networks and security setup is also necessary

Set up and run VNC server and Viewer or remote desktop to allow for both computers to be accessed easily during initial setup.

5. Getting Started

Install the Cabak Mon Application, SQL Express and SQL Config Manager on both Machines.



5.1 Setting up the Routers

The standard port for SQL is 1433. This ports needs to be permitted in the Router for incoming and outgoing request.


Any SQL incoming requests for these ports need to be directed to the computer running the Cabak Application.

Often the co-ordination of the site IT professionals will be required to ensure permissions and port forwarding are set up correctly. This document will not attempt to tell you how to set up a router, only that it is needed.




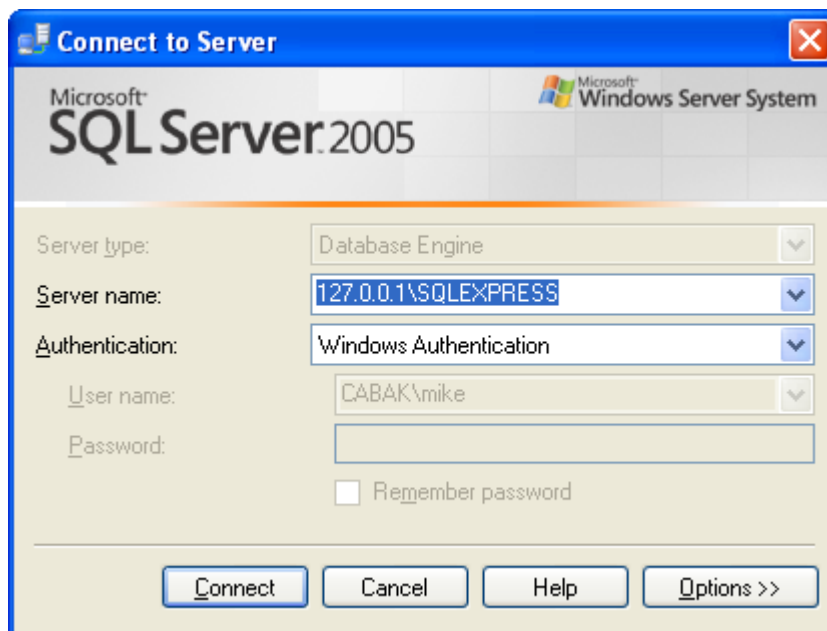
Only the server is required to have port forwarding enabled.

5.2 Setting up the Database

The data base can not be accessed remotely  unless a user name and password for remote access is configured. The data base at the Local Site that is intended for use as a server must be configured as follows.

5.2.1 Open SQL Server Management Studio

To achieve this, the database will need to be opened with the SQL Server Management Studio software on the Local Site (server)  and the database selected. This must be done locally via VNC, remote desktop or by physically accessing the local computer.



The SQL Server Management Studio will prompt for the server name and type of Authentication. Enter the Server name as shown “127.0.0.1\SQLEXPRESS” and select the Authentication as “Windows Authentication”, then select connect.



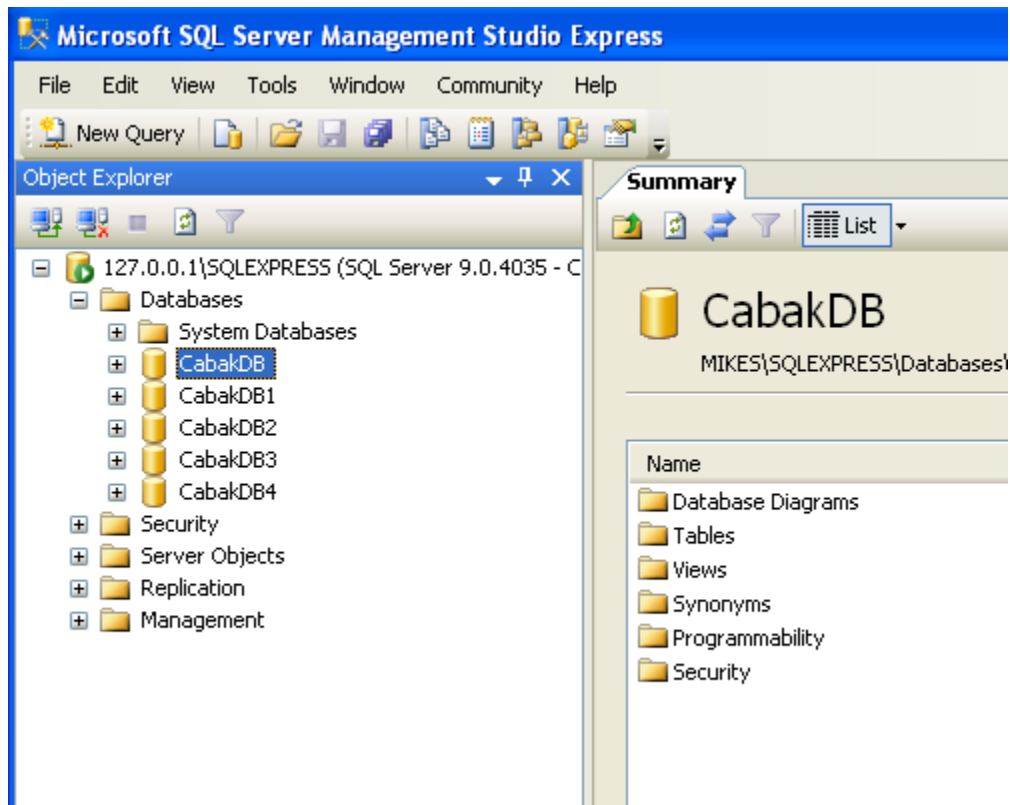
Note: The server name can be entered as the domain name, IP Address (eg. 192.168.0.3) or localhost.



Warning: Users who are unfamiliar with databases and the associated programs should be cautious as serious damage can result to a database when using powerful tools such as SQL Express.

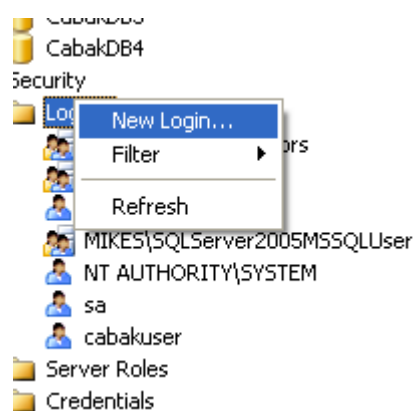
5.2.2 Select the Data Base to edit

There may be many databases on the computer, but the database required is called cabakdb.mdb



Expand the directory under the Databases and confirm the name is cabakdb

5.2.3 Add a new login



Select LOGIN and right-click to produce the NEW LOGIN option. Select the NEW LOGIN option.

Create a login USER NAME and PASSWORD and nominate the DEFAULT DATABASE.

If you do not want to change your password or have an expiry date on the password the ENFORCE PASSWORD POLICY needs to be unchecked as shown.

The screenshot shows the 'Login - New' dialog box in SQL Server Enterprise Manager. The 'Login name' is 'cabakuser'. The 'Authentication' method is 'SQL Server authentication'. The 'Password' and 'Confirm password' fields are masked with dots. The 'Enforce password policy' checkbox is unchecked and highlighted with a red box. Below it, 'Enforce password expiration' and 'User must change password at next login' are also unchecked. 'Mapped to certificate' and 'Mapped to asymmetric key' are unselected. The 'Default database' is 'CabakDB' and the 'Default language' is '<default>'. The 'Connection' section shows 'Server: 127.0.0.1\SQLEXPRESS' and 'Connection: CABAK\mike'. The 'Progress' section shows 'Ready'. 'OK' and 'Cancel' buttons are at the bottom right.

Select OK and close down the SQL Server Management Studio.



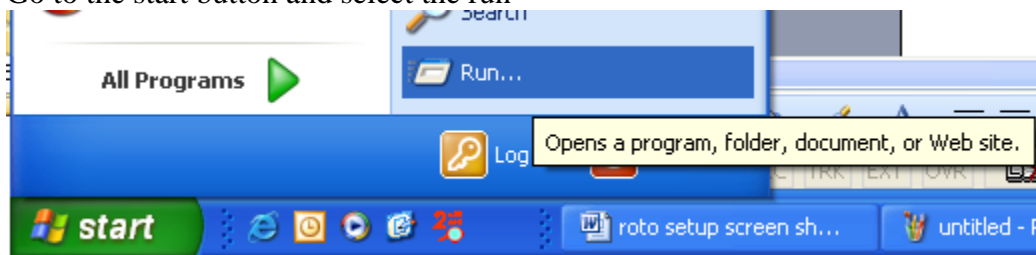
Warning: Always remember your password.

5.3 Testing connections

5.3.1 Telnet

In order to prove the connection is open and viable, Telnet enables us to connect two sites via the internet over a specific port.

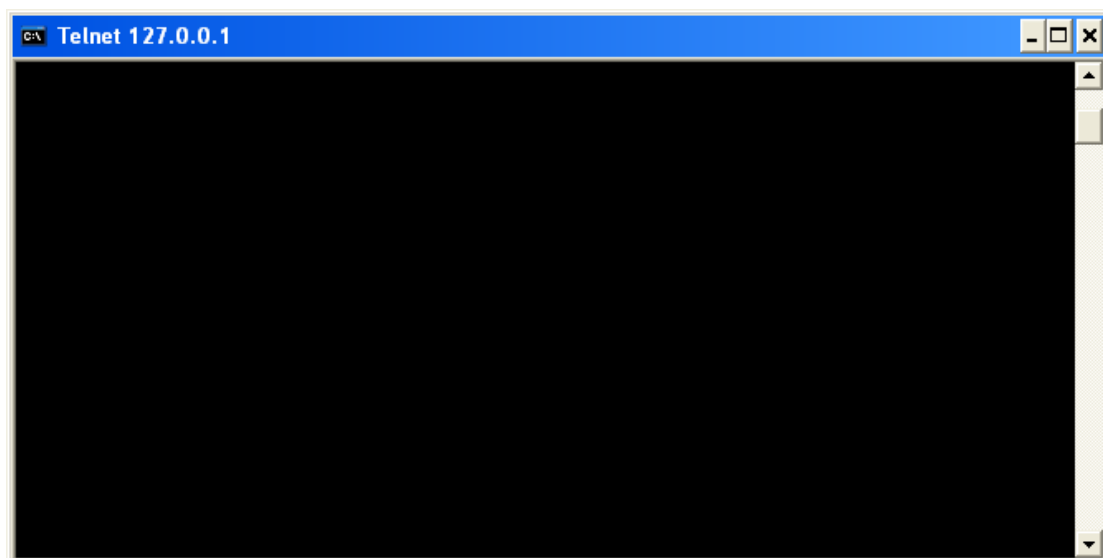
Go to the start button and select the run



Type CMD in the run dialog box, you will then be presented with a DOS command window.

Type **CD** to return to the Root Directory.

Type the following command to open telnet connect to a remote IP address and which port to Use **TELNET 125.225.01.001 1433**



If you are presented with the following window you have successfully connected via Telnet.



Note: The connection name is displayed in the top task bar.



Note: If you see the following: **Connect Failed** then re-check the router setting at each end.

```
C:\WINDOWS\system32\cmd.exe
Microsoft Windows XP [Version 5.1.2600]
(C) Copyright 1985-2001 Microsoft Corp.

C:\Documents and Settings\mike>telnet 123.345.567.6 253
Connecting To 123.345.567.6...Could not open connection to the host, on port 253
: Connect failed

C:\Documents and Settings\mike>_
```

5.3.2 SQL Server Management

In order to prove the database is configured correctly for remote access, the SQL Server on the remote site computer  can be used to connect to the database on the local computer. 



5.3.3 Standalone Computer

If you encounter issues establishing a connection to the database and the above two examples of testing the connection do not work, then install the Cabak Mon on a laptop with direct internet access via mobile DSL or similar and attempt to connect to the local and remote site databases. This will help determine if either site is set up correctly, as the laptop is directly connected without routers and network permissions etc. making the set up simpler.

6. Setting Up the remote Computer

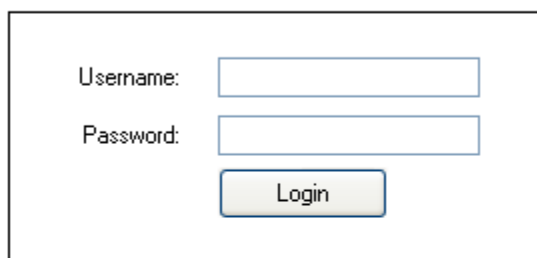
6.1 Cabak Connection setup

When you first start the Cabak Mon program it will display the following login screen.

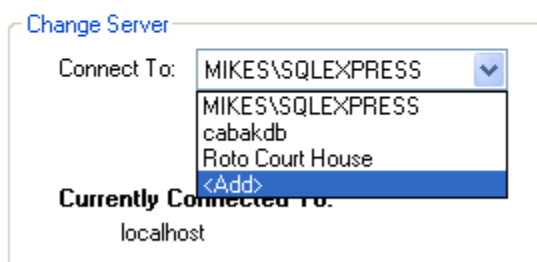


Note: Cabak Mon has a user selectable option to open either in the minimised or maximised position. If minimised is selected, you will need to first go to the system tray and maximise the program before you proceed.

User Login



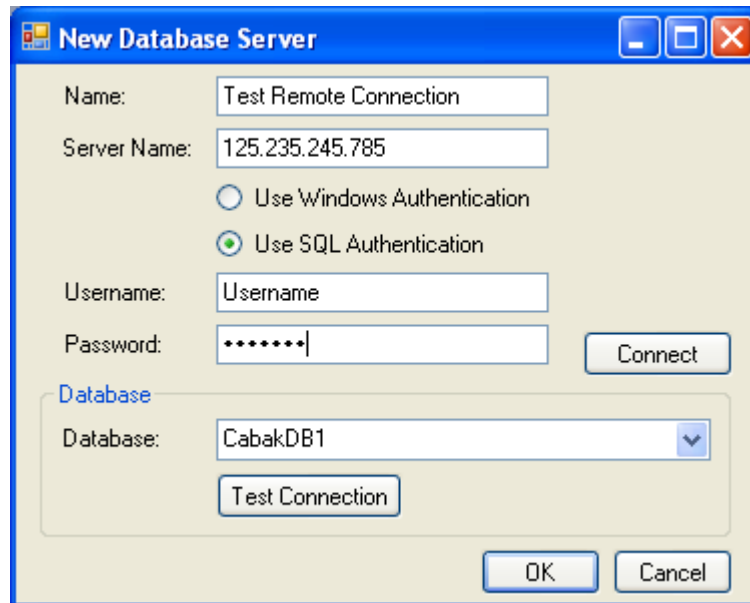
A dialog box titled "User Login" with a white background and a black border. It contains two text input fields: "Username:" and "Password:". Below the "Password:" field is a "Login" button with a grey gradient and a black border.



A dialog box titled "Change Server" with a white background and a black border. It features a "Connect To:" label followed by a dropdown menu. The dropdown menu is open, showing a list of server names: "MIKES\SQLEXPRESS", "cabakdb", "Roto Court House", and "<Add>". Below the dropdown menu, the text "Currently Connected to:" is displayed, with "localhost" underneath it.

Unlike a standalone site where you enter in your user name and password, we need to select a server to connect to.

For the initial instance the server details will need to be entered. Select the <ADD> option and the new data base server dialog box will be displayed.



The new dialog box requires a name. This is a visible tag only, with no specific requirements. Use a name that makes sense, for instance the suburb or company name at the local site.

The server name is the remote IP address, in my example it would be 203.1.219.227.

Enter in the user name and the password

Once you connect you are able to select what database you want, typically the Cabak Mon will auto name the data base CabakDB. However, advanced users may have renamed the database.

The Test connection function is a final confirmation that everything is set up correctly.

6.2 Starting a session

Now everything is in order to start a remote session, select the server you wish to connect to (there can be more than one), then press the CONNECT button.

User Login

Username:

Password:

[Change Server](#)

Connect To:

Currently Connected To:
localhost

The user can now log in as normal and will have access to the same info as they would locally.

6.3 Register your software



Note: Don't forget to register your software. Contact details can be located at the end of this document.

7. Security Control

The security of LANs is a concern. Often access is denied to ensure integrity of a system.

The following are a few suggestions on ways to improve the security of the system:

- a) Use a regime of constantly updating passwords
- b) Limit the input at the router to a specific IP range or a specific IP address to limit the access to a user or small number of users
- c) **Alter the PORT from 1433**

8. Contact Details

For any further details Contact Cabak on:

P (07) 3256 8606

F (07) 3256 8606

M 0412 063 566

E mike@cabak.com.au

Check out the web for additional application notes. All information is available for download from www.cabak.com.au

This document was created with Win2PDF available at <http://www.win2pdf.com>.
The unregistered version of Win2PDF is for evaluation or non-commercial use only.
This page will not be added after purchasing Win2PDF.